

# THE Mountain matters

The Mountain Retreat & Learning Centers, Inc.

April 2002

## INSIDE

From The President .....	2
Larry Wheeler to Change Staff Position .....	3
What's New at the Retreat Center .....	3
Opportunities .....	3
Meet the Candidates .....	4
Ballot 2002 .....	5
Retreat Center .....	6
Milestone Learning Center .	7
Learning Center for Leadership .....	8
Upcoming Programs .....	9
Giving .....	10



**The Mountain Matters**  
published bimonthly by

THE MOUNTAIN  
RETREAT & LEARNING CENTERS, INC.  
P. O. Box 1299  
Highlands, NC 28741  
(828) 526-5838  
fax (828) 526-2511  
info@mountaincenters.org  
www.mountaincenters.org

Tom Warth, President  
Carol Hamilton, Editor  
Walita Olson, Production

Printed by  
Cashiers Printing



## Heritage Hall Construction Nears Completion

The first stage of the Dining Hall renovation project is nearing completion. The estimated cost for the whole project is \$1,000,000. Because of the high cost, we decided to do the remodeling in three stages, the first of which is Heritage Hall. By starting here we were able to continue food operations during construction and make the current bathrooms available to guests while we build new ones as part of Heritage Hall. In addition, we are creating much needed, improved classroom and community space.

The deconstruction phase started on Sunday, January 20 with the help of several Mountain Ambassadors—**Juliet Araujo, Sue Folk, Sandy Gaither, Steve Hollingsworth, Nicky Moering, Diadee Springer, and Anne Staley.** They removed the displays from the walls and cleaned out all the furnishings and equipment. Then other volunteers moved in, including **Jim Calley, Gordon Crain, Joe Creech, Roger Johnson, Karl Kappus, Don Osgood, Hank Raichle, John Rolke, Greg Trollope, Carl Toney, Fred Vermillion, and Bob Whitney,** removing all of the old walls, ceiling and floors. The rebuilding began the first of March with a contractor from Highlands.



*The new ramp leading to the new Dining Hall entrance.*

Continued on page 12

## Join us for the Dedication of Heritage Hall Members & Donors Weekend – Memorial Day, May 24-27, 2002

Calling all Mountain members and donors! Plan to join us for this very special Memorial Day Weekend to be part of the dedication ceremony for the newly completed Heritage Hall. You made it happen—now help us celebrate! Together we'll experience music, nature, visions of the future, work projects, workshops, worship and the Annual Meeting.

Join **Dr. M. Maureen Killoran**, Minister of the UU Church of Asheville, NC, for her workshop, *"The Road That Leads To You,"* examining the concept of life as a pilgrimage.

As always you'll enjoy wonderful food and lots of Mountain family fellowship. Saturday we'll meet at the base of The Mountain for a Saturday afternoon barbecue with all the fixins' and fun of a picnic. Saturday evening will feature The Mountain's Annual Meeting where, among other things, volunteers of note will be honored. On Sunday, the annual early morning memorial service will be held in the Memorial Garden honoring Life Members who have died during the past year. Following breakfast we'll join together for worship. Plus you'll get an

Continued on page 5



## About The Mountain

Located high in the Southern Appalachian Mountains, The Mountain Retreat & Learning Centers is a place to expand your horizons—explore new ideas, meet new people and reconnect with your self, community and the natural world.

Surrounded by the Nantahala National Forest, our home is Little Scaly Mountain (4200' elevation), four miles southwest of Highlands, North Carolina.

The Mountain offers excellent programming for all ages—on The Mountain and beyond.

**The Retreat Center** hosts diverse groups and provides programming for all ages. **Milestone Learning Center** sponsors participant-driven programs designed to facilitate personal growth and leadership development of youth.

**The Learning Center for Leadership** provides programs and resources that enhance skills for transformational leadership in congregations.

Inspiration mixes with renewal as you challenge yourself to grow and learn.

### Board of Trustees: 2001-2002

#### EXECUTIVE COMMITTEE

Tony Stringer	Chair
Ivan Cotman	Retreat Center
Gini Courter	Milestone Learning Center
Jean Findley	Financial Advisor
Hildegard Gray	Secretary/Planning
Ed Mangiafico	Board Leadership
Dorrie Senghas	Learning Cntr. for Leadership
Claire Keane	Recording Secretary
Tom Warth	President

#### AT LARGE

John Blevins	Missouri
Rosemary Bray McNatt	New York
Lanie Damon	Georgia
Jewel Graham	Ohio
Adam Griffith	Texas
Janice Marie Johnson	New York
Ken Nafziger	Virginia
Bruce Parrish	Georgia
Richard Rothman	Georgia
Tom Russell	Missouri
Jeanne Shirley	Arizona
R.K. Whitehead	Georgia

## FROM THE PRESIDENT

"The Mountain Matters" is the title of our newsletter chosen with great intentionality a number of years ago. It is true, The Mountain does matter! I received this in the mail today: "I wanted to share a story with you that came my way. A friend of mine told me that he was at a bus stop one day when he saw a young man whom he had recognized as a former youth that he had worked with years ago. He had, among other things, taken the young man in a group of inner city youth to The Mountain. He said that many of the youth had never been out of the city and had absolutely no idea that places like The Mountain even existed. When he asked this teenager-grown-to-manhood how life was going, the young man answered that he had just served several years in prison. When asked how he had survived spiritually during those years, the young man replied that in the darkest nights of his soul, he had soothed himself by calling up to memory what sunsets looked like at The Mountain." The Mountain Matters.

Last week one of our PALs (Peer Advocate Leader) was asked to help run a program for a group of youth and their chaperones whose values, as our PAL soon discovered, appeared to be painfully different from his own. This young man found himself struggling to live up to the responsibility of responding with deep compassion. But he cared enough about The Mountain to allow himself to experience the discomfort of discovery about the true meaning of "tolerance" and "acceptance" and "embracing diversity." The Mountain Matters!

Because The Mountain does matter to so many people, it is my job to see that realistic strategic plans are in place that will ensure that The Mountain and all of its program centers will continue to provide the transformative experiences that have become the "hallmark" of The Mountain. These strategic plans will position The Mountain to meet the financial, staff and management challenges in these difficult times for non-profits. Highlights will be available for your review later this year. Please call us for a copy.



## Generous Donations Makes Guest Improvements Possible

Thanks to a generous donation from **Anne Staley**, we have been able to make some significant improvements to the facilities at The Mountain. Anne's gift provided funding to build a ramp that makes the library wheel-chair accessible, and outside doors were installed that connect the ramp to the library. Until this installation, the only access was via steps in the lodge. We were also able to purchase one hundred new chairs for the Great Room in the lodge to replace the worn chairs that had been in service for quite some time.

New carpeting was installed in the guestrooms and hallways of the lodge and the squeaky floors upstairs have been quieted. New bedspreads were procured for the guestrooms and the overhead lighting has been improved in the Great Room. Lamps, mirrors and towel tacks were purchased for some of the cabins, and in addition to that, dessert bowls, drinking glasses, and trays were obtained for the Dining Hall. Thank you Anne Staley for being such a good friend to The Mountain and for helping us create a warm welcoming place for all of our guests.



## Larry Wheeler to Change Staff Position

Last November I approached **Tom Warth** about transitioning out of the Development Director position by the end of 2002. The reasoning is quite simple. At some time in the next few years I will want to cut back my hours and eventually retire. The Development position is a critical one for the future of The Mountain. Tom and I concluded that the easiest transition to a new Director will occur with me still here as an active part of the staff. I can introduce people to the new Director and be of support as he or she brings a new focus to the position.

I will not be bored as I am going to concentrate on exploring planned giving opportunities for The Mountain with selected existing members and donors. In addition, I will remain The Mountain's primary contact point for UUA activities, the Council of UU Camps and Conferences (CU2C2), and interface with certain other UU organizations and individuals as appropriate. I also will pick up the responsibilities for our volunteer and intern program.

Our search is already underway to find a new Development Director—see the accompanying box below for details.

## What's New at the Retreat Center

**Susanne Walker** who has worked at The Mountain on and off for a number of years is taking a break from her complex job as Logistics Coordinator to be a full-time mom to her two sons, **Lincoln** and **Logan**. Susanne has a long history here at The Mountain where she was once a camper. **Susan Smith** will be assuming the Logistics Coordinator's duties and will continue to oversee administration of our Elderhostel program. **Robert E. Smith** will be moving from his duties as Auxiliary Staff Coordinator to become the Implementation Coordinator for Retreat Center programs. He will also continue as our liaison to the Highlands community. Our Program Department staff also includes **Nancy Heath**, Team Leader and **Paul Meinersmann**, new Coordinator of Outdoor Adventure Activities. Look in the next issue of *The Mountain Matters* for more information about Paul and the other new folks who have recently joined our Mountain family, plus some changing job responsibilities.



## OPPORTUNITIES

### Development Director — Available July 2002

Directly responsible for \$500,000 in annual gifts from members and donors. Indirectly, assist with raising additional \$500,000 in special gifts. Supervise part-time Administrative Assistant, be active presence in guest activities, do some traveling, and serve as part of the senior staff. Applicants must have solid development experience. Forward resume to **Tom Warth**, President, The Mountain Retreat & Learning Centers, Inc., P.O. Box 1299, Highlands, NC 28741, or e-mail [tom.warth@mountaincenters.org](mailto:tom.warth@mountaincenters.org).

### Milestone Program Coordinator

Milestone Learning Center is seeking a self-motivated, creative person. **Desired qualifications include:** experience working with youth and young adults; commitment to social justice activism and diversity; excellent facilitation, problem-solving and conflict management skills; organizational skills, including both long-range planning and attention to detail; ability to work both independently and interdependently as a collaborative team player; critical thinking and analysis

skills; and strong written and oral communication skills.

**Responsibilities include:** experiential program design and implementation; promotion of programs and organizational values to constituency base; working with volunteers of all ages; and work to assure emotional and physical safety of program participants. For more information, contact **Jim Short**, e-mail [jim.short@mountaincenters.org](mailto:jim.short@mountaincenters.org) or call him at 828-526-5838, ext. 217.

### Residential Community Project Manager

The Mountain needs a Project Manager to coordinate the development of the Residential Community. This position would be part-time and would require the manager to live in the community for the next two to three years. A retired individual who has real estate development or project management background would be ideal. If you have any interest or questions about this position, please write **Tom Warth** at [tom.warth@mountaincenters.org](mailto:tom.warth@mountaincenters.org) or call 828-526-5838, ext. 218. This is a great opportunity to make a difference at The Mountain.



# Meet The CANDIDATES

In line with the Bylaws, the Board Leadership Committee of The MR&LCs, Inc. Board of Trustees recommends the following six (6) candidates for election to The MR&LCs, Inc. Board of Trustees effective May 25, 2002. All candidates will serve three (3) year terms with all voting rights.

## Rosemary Bray McNatt

Rosemary is a Unitarian Universalist minister serving the Fourth Universalist Society of New York. She is a nationally-known writer, the author of a children's biography "Martin Luther King"; a memoir, "Unafraid of the Dark" and "Beloved One: Prayers for Black Children." In addition she has written and published a number of essays and articles for the *New York Times Magazine*, *Glamour*, *Redbook*, *Ms.*, *Essence*, *The Village Voice* and the *Chicago Tribune*. Rosemary served on the Board of the Starr King School for the Ministry from 1992-1999, and as its Board President 1999-2001. She was appointed to the Board of MR&LCs, Inc. in May 2001, and serves on the Board's Working Group for the Learning Center for Leadership.

## Ivan Cotman

Ivan is currently the Director of the Post-Secondary Enrollment Options Program at the Detroit College of Business. Prior to that he fulfilled many roles in the Michigan Department of Education during the years 1979-1998, serving as Deputy and Assistant Superintendent at one time or another. Prior to that he served as Director of Employment for New Detroit, Inc. as well as other managerial positions in school and service agencies in Michigan. Ivan has served on the Board of Trustees for Meadville Lombard Theological School, the UUA's President's Council, the UUA's Journey Toward Wholeness Transformation Committee and the UUA Funding Panels. He was appointed to the Board of MR&LCs, Inc. in May 1999, and currently serves as Chair of the Board's Working Group for the Retreat Center.

## Gini Courter

Gini is partner and co-owner of TRIAD Consulting, a computer consulting, database development and training company serving education and industry, headquartered in Flint, Michigan. She has authored/co-authored seventeen personal computer books including seven academic text-

books. Five of her titles have been certified by Microsoft as approved courseware for the Microsoft Office User Certification Exams. Gini has served on the Unitarian Universalist Board of Trustees since 1995 and is currently Chair of the UUA's Board of Trustees Finance Committee. Gini was appointed to the Board of MR&LCs, Inc. in August 2001, and serves as Chair of the Board's Working Group for Milestone Learning Center.

## Lanie Damon

Lanie is a professional career consultant in Atlanta, Georgia. She has been an active Unitarian Universalist for more than 25 years serving as SUUSI Board President, MidSouth District Vice President and Long Range Planning Chair, and various leadership roles within UUCA of Atlanta. She has been an active supporter of The Mountain for over twenty years and is "committed to serving The Mountain Retreat & Learning Centers, Inc. and its mission at this most important stage of growth and development." Lani was elected to the Board of MR&LCs, Inc. in May 1999, and serves on the Board's Planning Committee.

## Adam Griffith

Adam is a sixth-grade science teacher in Houston, Texas, with the Houston Independent School District. He first came to The Mountain as a rising tenth grader and continued on for two more years in Senior High Camp and was elected a "spirit" in his senior year. Adam served as a camp counselor in the summers of 1996-1998 and Co-Camp Coordinator in 2001. "The beauty of my relationship with The Mountain is that it provided opportunities that challenged me with varying intensity while increasing at a rate that was appropriate for my growth as an individual. From this I benefited while I had the sense I was giving something back to The Mountain. I want to serve on the board to help ensure that The Mountain continues to act as a catalyst for change at a rate even greater than the first twenty years." Adam was appointed to the Board of MR&LCs, Inc. in August 2001, and serves on the Board's Working Group for Milestone Learning Center.

## R.K. Whitehead

R.K. is President and CEO of Whitehead Die-Casting Company in Gainesville, Georgia. In addition to running this

business, he has been very active in local community activities including a visual arts center, the Chamber of Commerce, the Hall County Development Authority, Elachee Nature Science Center, Boys and Girls Club of Metro Atlanta and the UU Congregation of Gwinnett. R.K. is the father of four children (two will be in camp this summer) and is "very passionate about The Mountain. I want to bring my business-planning skills to the work of The Mountain so that I can contribute to its growth and mission." R.K. was appointed to the Board of MR&LCs, Inc. in February 2002, and serves on the Board's Planning Committee.

#### Memorial Day Program – Continued from page 1

update on The Mountain's vision for the future.

Two and three night options available. Call The Mountain Office to register (828) 526-5838.

	Early Bird On or before 5/3/02	Regular On or after 5/4/02
Occupancy: Double	\$198	\$223
Multiple	\$184	\$209
Per Day Rate*	\$70	\$75
Youth 12-17	\$118	\$133
Children 4-11**	\$65	\$80

\* Two night minimum.

\*\* Children 1-3 years of age attend for FREE

## BALLOT 2002

*(All members plus donors who have given at least \$50 in the past year are eligible to vote.)*

In line with the Bylaws of The Mountain Retreat & Learning Centers, Inc., and in line with the recommendations of the Board Leadership Committee, the Board of Trustees unanimously recommends that all of the following six (6) candidates be elected to The MR&LCs, Inc. Board of Trustees, each serving three (3) year terms with vote effective with the Annual Meeting, May 25, 2002. The Board of Trustees asks for your affirmative vote for each candidate.

### Candidates for Trustee

*(To serve three-year terms effective May 25, 2002 – you may vote for no more than six (6) candidates.)*

\_\_\_\_\_ Rosemary Bray McNatt

\_\_\_\_\_ Gini Courter

\_\_\_\_\_ Ivan Cotman

\_\_\_\_\_ Lanie Damon

\_\_\_\_\_ Adam Griffith

\_\_\_\_\_ R.K. Whitehead

Note: **You may vote via U.S. mail or e-mail**

**To vote by e-mail**, please send your votes to the Corporate Secretary, Hildegard Gray, at grayvacher@yahoo.com. Please put "Mtn. Vote" in the subject line and specify the names of those voting.

**To vote by U.S. mail**, please enclose your ballot in an envelope and address it to:

Hildegard Gray  
1656 North Pelham Road  
Atlanta, GA. 30324

Name of Voter: \_\_\_\_\_

Name of second Voter: \_\_\_\_\_



## RETREAT CENTER

### Korean Exchange Program Enhanced by Mountain Stay



Visiting local waterfalls.

tions on what they had learned; American folk music with Bill and Lorain Harouff; "hanging out" and foosball. The students were required to ask questions and make all decisions as a team, something their



Enjoying free time in the Lower Rec Hall.

In January, University of North Carolina Charlotte brought twenty-five Korean engineering students to The Mountain as part of a four-week exchange program in which the students were to develop an understanding of globalization and the American business environment, acquire teamwork skills, critical thinking skills, and improve English proficiency. The program is sponsored by UNC Charlotte's Office of Intercultural Outreach Programs, and was led by **Susan Lambert** and **Darwin Smith**.

Focusing on team work and critical thinking skills, Mountain staff member **Nancy Heath** designed a dynamite program of experiential activities that were totally new to the students. Some of the activities were: group games; initiatives; challenge course with intensive processing; group presentations on what they had learned; American folk music with Bill and Lorain Harouff; "hanging out" and foosball. The students were required to ask questions and make all decisions as a team, something their own educational system does not encourage. Social Time with other guests was also a real treat for the students as it gave them a chance to interact and talk with Americans.



The group kicked off their American visit with a successful weekend at The Mountain.

After the closing circle on Sunday morning, UNC Charlotte leaders said the students had learned as much in the weekend at The Mountain as they would have hoped for by the end of their four weeks in the U.S. Darwin commented that they would be restructuring their plans and raising their expectations due to the powerful experiences the group had here.

The weekend is another example of the educational power of experiential learning and of The Mountain itself.

#### Classified Ad – *The Highlander* – June 8, 1962

"I agree that \$525,000 is a lot of money, but where else can you get so *much* for your money? I have a 100-acre mountain to sell. It is like no other mountain. It has an elevation of 4200 feet. It overlooks three states. It has lakes, tennis courts, stables, cabins, cottages, and a beautiful new 5-bedroom house. . . . I searched 13 years to find it – all *you* have to do is pick up your telephone and call me, Ben W. Wax, Highlands, NC, Phone 4687."

*This ad from Ben Wax appeared in The Highlander, our local paper, in 1962. He built this mountain much as we know it today. In October 1979, we bought this place for \$490,000, and current appraisal of our property is \$6.4 million.*



# MILESTONE LEARNING CENTER

## Milestone Matters

**2002** is off to an exciting start! Two LEAP programs (Raleigh/Durham, NC and St. Joseph, MO) are moving full speed. Three groups —Project STEAM (Asheville, NC), Communities in Schools (Brevard / Rosman, NC), Coming of Age group (Greenville, SC)—experienced Leadership Schools for Social Justice. Over 80 Junior High and 186 Senior High UUs (and their mighty advisors!) attended Conferences this winter.

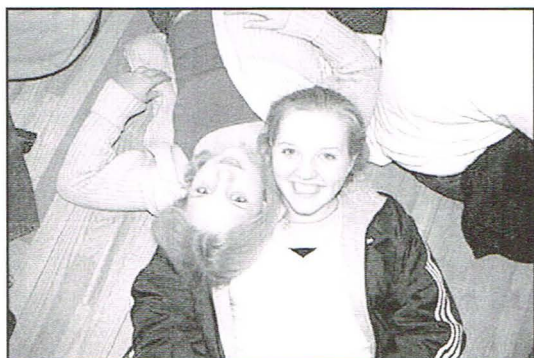
### PAL Program a Continuing Success

One of our Service Learning programs—the PAL program—continues to flourish. Peer Advocate Leaders (PALs) and their mentors serve as volunteers throughout our programs. Eighteen PALs implemented workshops and touch groups for CONS; they'll also assist in Leadership Schools for Social Justice. We joyfully thank winter/spring PALs: **Bri Atkins; Sophie Batchelor; Erin Carmola; Daniel Crain; Allison (George) Gaines; Ashley Gray; Hanna Hay; Nate Johnson; Anne Lancaster; Ben Long; Shaun McCray; R.C.**

**Mitchell; Olivia Mooney; Mary Ruchti; Ayanna Stringer; Shaugn Tohill.**

And we recognize PALs' families for providing transportation so their young

leaders can participate. PAL Mentors—who supervise and coach the PALs—were **Jeff Bauer; Drew Blass; Scott Ross; Annie Campbell and Lissa Sykes.** Heartfelt thanks to them, and to "Mentor Mom" **Katie Long**, who served every CON, and to **Susan Carmola**, who coordinated Worship for winter CONS. Finally, staffer **Mike Hodapp**—here only since October—deserves special thanks for assuming responsibility for CONS while we looked for a new Camp & CON Coordinator.



*Finding friends at a winter CON.*



*PALs in action.*

### Camp & CON Coordinator Hired – Welcome Kim Ingram

After a long, extensive search, we are delighted to welcome **Kimberly Ingram** as the new Camp & CON Coordinator. Kimberly says, "After two years of working with AmeriCorps, I wanted the ability to continue to impact communities. In this role I will still be able to enlighten youth on community, national and international social issues and develop their leadership skills through sustainable education during camps and conferences. This position encompasses opportunities for me to grow, be challenged, creative and innovative—all of which are invigorating to me. It's evident that youth who participate here are touched and changed by The Mountain. I look forward to being a part of the dynamic team that creates this magic."

Watch for MountainCamp news in the next **Mountain Matters**. We have waiting lists for several camps already, so if your child isn't registered, please call immediately.

We at Milestone are mindful every day of how lucky we are to be entrusted with the care and training of today's youth. Please call 828-526-5838 or e-mail [info@mountaincenters.org](mailto:info@mountaincenters.org) if you'd like more information about our programs.



*Kimberly Ingram (left) and Shelley Denham.*



## LEARNING CENTER FOR LEADERSHIP

### LREDA Gives First Grant to LCL Program

#### *"How Your Church System Works"*

The Learning Center for Leadership is celebrating its receipt of the first-ever grant from the Liberal Religious Educators Association (LREDA) 21st Century Fund, to be used for developing a web-based course called "How Your Church System Works," for religious educators and others. Participants will create an on-line learning community as they post bios, respond to comments or questions, and post answers to course materials.

The focus of this course will be on congregations as organizations where people seek to find companions on their faith journeys, learn to work together in leadership teams, and deepen their spiritual lives. Systems theory will be included, along with the relationship between theology, professional leadership, paid staff and volunteers, church programs and Peter Senge's five disciplines.

The online course should be up and running by the end of 2002.

### LCL Staffer Joins Church of The Larger Fellowship Board

Laurel Amabile of the Learning Center for Leadership has begun her first term on the Church of The Larger Fellowship (CLF) Board. The CLF provides ministry to over 3,000 adult members and over 800 children and youth around the world. The church promotes Unitarian Universalism through an array of programs, printed and on-line resources, worship materials, publications, and staff services. The CLF is seeking to expand its ministry through the development of on-line educational programs and member interaction. The development of youth Coming of Age materials and "Between Sundays" resources for families is underway. The CLF Board meets in April to engage in a strategic planning process. For more information, see [www.uua.org/CLF](http://www.uua.org/CLF).



*Laurel Amabile*

## Experience Leadership School at The Mountain

At the end of the **Mountain School for Congregational Leadership** in July 2001, a participant said, "The entire arc



of the experience was a work of art—all the components are well done and immensely valuable. The con-

tent, sequencing, the skilled staff and obvious dedication of the faculty were a gift and a blessing."

That might just mean that people were feeling good about the School at the end of a long week, but here are some quotes from a follow-up evaluation done six months later:

- MSCL was one of the best group training experiences I've had, and I've had many.

- I see the training as essential to providing good, stable leadership for our faith. This type of leadership is needed if Unitarian Universalism is going to grow.

People who attended **Leadership School for Religious Educators** were equally pleased:

- I think it has influenced my work on all levels, sometimes in subtle ways.
- Skills and information learned touch on everything.
- Systems theory helped me a lot to see the total picture!
- This is the only place in-depth Organizational Development is taught.
- Personally and professionally challenging and beneficial to religious education work.

Graduates have taken new skills, understandings and practices back to their congregations, and have put them to good use. We hope you'll be among the 40 participants coming to each of these Schools in July 2002—register now, to reserve a place! See page 9 for more information.



## UPCOMING PROGRAMS

### RETREAT CENTER PROGRAMS

#### MountainScape Flyfishing Weekend

**June 14-16, 2002**

Spend a weekend with avid fly fisherman and instructor, Carl Hammond-Beyer. For those with some fly fishing experience, refine your skills and way of thinking about the sport while casting and catching fish in nearby rivers. Topics include fishing strategies, casting skills, reading the streams, fly selection, and of course catching fish.

#### Grandparent and Grandchild Week

**June 23-28, 2002**

Spend quality time with your grandchildren (ages 8-12) experiencing the riches of The Mountain and the surrounding area. Come to camp and enjoy crafts, music, campfire with marshmallows, hiking, and whitewater rafting or tubing, join in on putting together a skit, and maybe even an outdoor overnight for the grandchildren.

#### Family MountainCamp

**June 30-July 5, 2002**

Go to camp together! Designed for families with children who are 1-11 years old, your family will experience typical camp activities—boating and swimming on the lake; non-competitive games, arts and crafts; folk dancing, hiking, nature study and much more. Beat the heat and take time out this summer to enjoy your family—Mountain style.

#### MountainScape Paddling & Hiking Adventure in the Appalachians!

**July 14-19, 2002**

Hold on to your hats . . . and paddles too! This week provides non-stop fun for a group of adventurers on area rivers, lakes and trails. Activities include: canoeing; "ducky" the scenic Nantahala River (rubber kayaks); raft the Chattooga River; hike the Appalachian Trail; and evening programming.

### MILESTONE LEARNING CENTER PROGRAMS

#### Body, Mind, and Spirit – Theme Weekend

**May 24-26, 2002 — 7th-9th Graders**

Move from fabulous cooperative physical feats to intensely personal introspection in this weekend of movement and body awareness. We will be flying and tumbling across The Mountain, testing our assumptions about strength and gender, and exploring contemplation and spirituality through our bodies. No movement experience required.

#### Leadership School for Social Justice Summer Week

**July 27-August 2, 2002 — Rising 10th graders-2002 HS graduates**

Join us for this great opportunity to gain skills, knowledge to expand your leadership capacity. Through outdoor adventures, experiential workshops, arts, and service activities you'll be able to explore your own values, learn about important social justice issues and community organizing, find ways to put your ideas into action.

### LEARNING CENTER FOR LEADERSHIP PROGRAMS

#### Leadership School for Religious Educators

**July 7-13, 2002**

Explore your own leadership style, gain interpersonal and organizational skills, deepen your spiritual life and network with religious education colleagues from UU congregations.

#### The Mountain School for Congregational Leadership

**July 21-27, 2002**

Expand your leadership skills by exploring your own leadership style, gaining interpersonal and organizational skills, deepening your spiritual life and network with lay leaders from UU congregations across the region.

### For All of the Above Programs

**Call (828) 526-5838 to register or for more information. Or check out our website at [www.mountaincenters.org](http://www.mountaincenters.org).**



# GIVING

GIFTS SINCE LAST ISSUE

## *Our profound thanks to . . .*

### **Trillium Vision Holders (\$100,000 +)**

Harold & Charlotte Johnson, Black Mountain, NC

### **Rhododendron Vision Holders (\$20,000 - \$24,999)**

Gladys Light, Miami Beach, FL

### **Mountain Laurel Vision Holders (\$15,000 - \$19,999)**

Steve Hollingsworth & Daidee Springer, Chattanooga, TN

### **Flame Azalea Vision Holders (\$10,000 - \$14,999)**

Nancy Wylie, Atlanta, GA

### **Patron Members (\$5,000 - \$9,999)**

John & Nancy Burns, Knoxville, TN  
Hilda Ratner, Nashville, TN

### **Life Members (\$2,000 - \$2,500)**

James E. Filler, Belmont, NC

### **Community Life Members (\$2,000 - \$2,500)**

Minister, Northwest UU Congregation, Atlanta, GA  
Incumbent - Don Southworth (Donated by Anne Staley)

### **Memorial Memberships (\$1,500)**

Persis C. Penningroth, Bryson City, NC & Sarasota, FL  
(1902-1993, Donated by her children - Penny O'Brien, Paul Penningroth & Emily Wagstaff)  
Lois Cook Baum, Stone Mountain, GA (1929-2002)

### **Special Gifts/Gifts-In-Kind/General Fund (Gifts of \$250+)**

(Note: All gifts of \$1,000+ shown with \*\*)

Clint Betz, Ft. Myers, FL \*\*  
Glenda Cowart, Stone Mountain, GA  
Harry & Rene Donavon, McKinney, TX \*\*  
Tim & Libby Eble, Mt. Pleasant, SC \*\*  
Maureen Killoran & Peter Hyatt, Asheville, NC  
Bob & Trudy Wendt, West Brandywine, PA

### **MountainCamp Scholarship Fund (Gifts of \$200+)**

(Note: All gifts of \$1,000+ shown with \*\*)

Richard Blough, Chicago, IL  
Ronald Brooks, Atlanta, GA  
Hilary Hamlin, Bristol, RI  
Carole Light & Alex Redmountain, Scaly Mountain, NC  
Paul & Sara Lovingood, Asheville, NC

### **Building Our Vision-Step 1/Dining Hall Remodeling (Gifts of \$250+) (Note: All gifts of \$1,000+ shown with \*\*)**

Bill & Lorain Harouff (et al) at Waynesboro UU Fellowship, VA

### **Endowment Fund Contributions (Gifts of \$250+)**

(Note: All gifts of \$1,000+ shown with \*\*)

Harry & Rene Donavon, McKinney, TX \*\*

### **New or Renewed Short-Term Loans or Promissory Notes**

Sarah Hargrove, Macon, GA  
Anne Heath, Duluth, GA  
Northwest UU Congregation, Atlanta, GA  
Darwin & Myra Smith, Dallas, TX  
Bobbi Stenstrom, Augusta, GA



## *In Memoriam*

**Gretchen Bremer-Hosken**, Port Orange, FL  
(A former Mountain Trustee)

## **Volunteer Opportunities at The Mountain**

Looking for a chance to be of service at The Mountain? There are many opportunities to be a big help to us in the upcoming months. Check these out:

**Camp Stayover Chaperones:** June 29-30 and July 13-14. We will award a gift certificate for two adults/one weekend for this job. In the past, we've needed 2-3 chaperones on these weekends. We might need chaperones on June 15-16 also, although we haven't had a need for chaperones on this weekend in recent summers.

**Camp Shuttle Drivers:** Drive campers to and from the Atlanta Airport and The Mountain.

**Airport Escorts:** Meet groups of youth at the airport and help them get from the terminal to the shuttle and from the shuttle to the terminal. The dates for shuttle drivers and escorts are:

- June 16 Airport to The Mountain,
- June 29 The Mountain to Airport,
- June 30 Airport to The Mountain,
- July 13 The Mountain to Airport,
- July 14 Airport to The Mountain, and
- July 27 The Mountain to Airport.

You can keep a Mountain van overnight at home to limit the number of round trips. You can also divide the duty with another person, splitting the job into single round-trips.

**Beginning Camp Counselors:** We are looking for folks, college age and up, who can volunteer to assist Beginning Camp counselors. That camp session is June 30-July 6. This is a stay in the cabin at night job. We will award a gift certificate for two adults/two weekends for this assignment.

Other volunteers are needed throughout the spring to help with Food Service either during the week or on weekends (or both).

Interested? Call **Larry Wheeler**, (828) 526-5838, ext. 230 or e-mail him at [larry.wheeler@mountaincenters.org](mailto:larry.wheeler@mountaincenters.org).



## Spring is a Popular Time for Estate Planning

As the summer travel season approaches, many of us think about our estate plans and making sure our affairs are in order. If you're among this group of people who need to update or revise their estate plans, please consider including The Mountain in them. It's really quite simple to add a bequest provision to your will or include The Mountain as a beneficiary of life insurance proceeds. Your professional advisor will be pleased to assist you in carrying out your wishes. And by doing so, you'll be helping The Mountain to insure that its objectives are carried out for many years to come.

Besides the satisfaction of leaving a personal legacy that includes The Mountain, your estate gift may also have beneficial tax implications. In addition, anyone who commits to a planned gift (bequest, trust, life insurance designation, etc.) becomes a member of the President's Society, which honors all who have made such gift commitments. If you become a President's Society during this initial stage of its existence, you will receive charter member status and also be invited to a special inaugural reception held at The Mountain during the 2003 Memorial Day Weekend.

**If you're going to be at The Mountain this Memorial Day weekend, please make plans to attend the Saturday afternoon reception hosted by The Mountain Endowment Board.** It will be a good opportunity to meet the Endowment Board members and have any of your questions answered. In the meantime if you wish to notify The Mountain that you have included it in your estate plans, or have questions about how to do so, please contact Development Director **Larry Wheeler** at (828) 526-5838, ext. 230.

## You can help make a difference in a young person's life!!

Think back to your summer camp experience or that of others you know. It's where friendships were made, new experiences tried and confidence built. It may have even resulted in the establishment of your life direction. You may have found role models or mentors who helped you in some complicated times.

For twenty-two summers, our MountainCamps have done all of this and more. Each summer more than 300 campers, from incoming 1st graders to graduating 12th graders have the opportunity to explore this special place, its environs and to stretch their limits. All of this happens in a supporting community with a committed MountainCamp staff and well structured programs that give campers many options to accelerate their individual learning patterns.

Many need financial help to have the opportunity to experience all that a MountainCamp can provide. Last summer we awarded over \$20,000 in camperships and already know that the demand is even higher this year. We have increased the salary we pay our youth staff members, and yearly we need to provide the materials and equipment that support the programming.

Please consider a tax-deductible contribution to support our young people as they attend a MountainCamp this summer. Complete the form below with the most generous gift you can afford. It will be an investment well spent and you will be able to have the satisfaction of knowing that you made a difference in a young person's life—not just for this summer but well into the future.



**YES! I want to make a donation to support The Mountain's Vision!**

### Apply my contribution to:

☐ Life Member    ☐ Dining Hall Remodeling    ☐ Scholarship Fund    ☐ General Fund

☐ \$50    ☐ \$100    ☐ \$250    ☐ \$500    ☐ \$1,000    ☐ \$2,000    ☐ \$5,000    ☐ \$ \_\_\_\_\_

Pay By: ☐ Check    ☐ VISA/Master Card    Card #: \_\_\_\_\_ Exp. Date: \_\_\_\_\_

Name: \_\_\_\_\_ Signature on Card: \_\_\_\_\_

Address: \_\_\_\_\_

City: \_\_\_\_\_ State: \_\_\_\_\_ Zip: \_\_\_\_\_

Phone: (day) \_\_\_\_\_ (evening) \_\_\_\_\_

The Mountain Retreat & Learning Centers, Inc., P. O. Box 1299, Highlands, NC 28741-1299



Continued from page 1

The architectural design was done by Mountain Visionholder, **Bill Pulgram**, with detailed plans developed by Martin and Associates of Atlanta. Staff member, **Ian Denham**, is serving as the onsite construction manager for the project. When it's completed we will have a first-class structure including larger windows, quality classroom space, Mountain and other UU history displays, improved social time space and three new bathrooms, two of which are fully accessible. Once Heritage Hall is completed, the old dining hall bathrooms will be



*Happy volunteer Joe Creech was part of the "tear down" team.*

removed. This will add much needed seating space in the current dining hall. And, we are building two accessible ramps—one from the REC Hall to the new Dining Hall entrance and the other from the Dining Hall parking lot. This will greatly improve accessibility to the building.

The pictures shown here only tell part of the story—you have to see it to fully appreciate the difference between what was and what now is. Heritage Hall will be dedicated Memorial Day weekend. Come be a part of the celebration.



*Nicky Moering helps save the Heritage Hall displays.*

## THE MOUNTAIN RETREAT & LEARNING CENTERS, INC.

P. O. Box 1299  
Highlands, NC 28741

Presorted  
Non-Profit  
US Postage  
**PAID**  
Highlands, NC  
Permit No. 46

